



Brine Cured & Drum Salted Cattle Hides

Origin

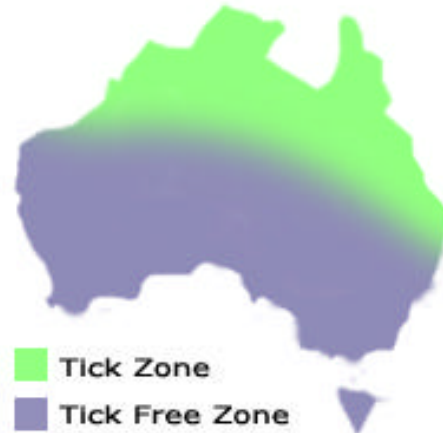
There are various Australian origins of the hides:

Tick Free Zone:

South Australia, South Western Australia
Victoria, Tasmania, New South Wales,

Tick Zone:

Queensland, North Western Australia and
Northern Territory.



Cure

Drum Salted or Brine Cured hides are offered
as conventional un-fleshed hides.

Type

Offers will quote the type of hide,
Cow/Ox, Ox/Heifer, Ox Hide, Dairy Cow, Bull, Yearling or Calf.

Selection

The sound and cut percentages may vary, each individual offer will specify the cut percentage. We normally offer on the basis of 80/20 or Better. Sound and cut hides are not packed separately.

Tick Free (TF)

Hides which are from the Tick Free States of Australia.

Free of Visible Tick (FOVT)

Hides which are visually free of tick but which may show tick damage under the hair.

Tick Free areas or (TFA)

Hides ex Tick Free Areas of Queensland. Some hides may show signs of tick damage once the hair is removed, which is generally much less extensive and severe than Straight Run (S/R) hides.

Straight Run or (S/R)

No sorting of ticky, brands etc. Will include a cross section of hide production, ranging from tick-free or nearly tick-free to light, medium and heavy tick.

Ticky (Tky)

Selections of 100% ticky hides (hides found to have evidence of tick or open tick marks).

Packing

Hides are packed and strapped on to wooden pallets that have been treated in accordance with ISPM No.15 Standard. Dependent upon the weight of hides ordered, a twenty foot ocean freight container will hold approximately twenty pallets.

Weight Franchise

All shipments are subject to a weight franchise of 5%.

TICK FREE ZONE WEIGHT / SIZE CATEGORIES AND PACK SPECIFICATIONS

Unfleshed Drum Salted Weight Range	Average Weight	Estimated Size (in finish)	Hides per Plt.	Hides per Cntr.
5 / 14kg	11.0 - 12.5	*20 / 22	100	1800
14 / 18kg	16.5 - 17.5	*26 / 30	60	1000
18 / 23kg	21.0 - 22.0	*32 / 36	50	950
23 / 30kg	26.5 - 27.5	*38 / 40	40	800
30 / 35kg	32.5 - 33.5	*44 / 46	35	630
35kg +	38.0 - 40.0	*48 / 50	30	540
40kg + (Bulls)	50.0 - 52.0	*54 / 56	25	400

* Average sizes given above are estimates without guarantee.

Our Standard Specification for the Export of Australian Hides is as follows:

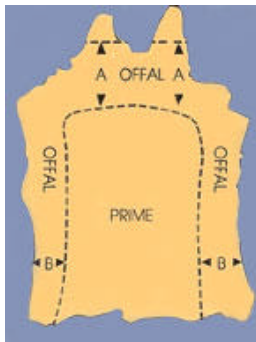
Take Off & Fleshing

Whilst the standard of take off may vary slightly between Origins, the majority of Australian hides originate from cattle that have been slaughtered in Government inspected licensed slaughtering establishments. The vast majority have mechanical pullers and air knives. Hides from Farm and small unlicensed slaughter yards are generally not included.

Unless specified otherwise, hide offers are understood to be unfleshed, a certain amount of fat and flesh may be adhering to the hide.

Trim

Hides from all origins within Australia are trimmed in a similar manner with short shanks and neck, without ears, lower lip and tail with all excess removed. Some origins may include a proportion of horse shoe or tail root trim, not exceeding 13 centimetres from the butt as per diagram:



18 kgs up	14/18 kgs	4/14 kgs	1/3.5 kgs
A=54cm	A=31cm	A=23cm	A=Nil
B=18cm	B=18cm	B=13cm	B=Nil

CUT HIDE IN THE VARIOUS WEIGHT RANGES.

Sound

A hide that has no cuts in the prime but may have up to 3 cuts in the offal.

Cuts

A hide that has up to 3 cuts in the prime and or up to 3 cuts in the offal. (a cut hide is defined as a hole penetrating through the skin. Flay marks which do not penetrate the skin are not classified as cuts.)

Faulty / Damaged

A hide with more than 3 cuts in the prime or with excessive defects such as large brands, warts, hair slip, poor cure, excessive holes or which is of poor shape.

Classifications

Meatworks Quality

Hides are fair to well flayed, the majority being machine pulled with some meat and fat adhering, well cured and may include a percentage of horn marks and brands depending on the origin. (Tick Free or Ticky)

Please note: The above specifications are subject to change without notice.